



# Wi-Fi Network Installation Guide

This installation guide is intended to be used with CenturyLink® High-Speed Internet Service

---

October 2018



## Quick Reference

Contact us at 877-726-6875 with any device or service issues

## Installation Guide

These instructions can be used to set up additional Public or Private networks.

## Public Network Set-Up

To set up Wi-Fi so that you have a public network for your customers, follow the steps below. These instructions assume you already have a private Wi-Fi network set up.

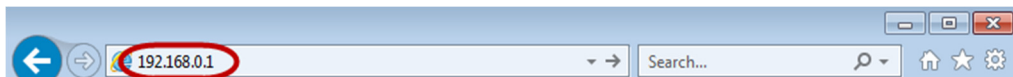
### Step 1

Connect a device to your modem.

- If the device is a laptop computer, the connection can be either through the existing wireless network or by connecting an Ethernet cord between the laptop and the modem.
- If the device is a tablet or smartphone, the connection can be through the existing wireless network.
- If the connection is through the existing wireless network, make sure you are connected to the modem's current private Wi-Fi network.
  - Go to Settings
  - Go to Wi-Fi and confirm that the device is connected to your private Wi-Fi network

### Step 2

Use your browser to go to 192.168.0.1



### Step 3

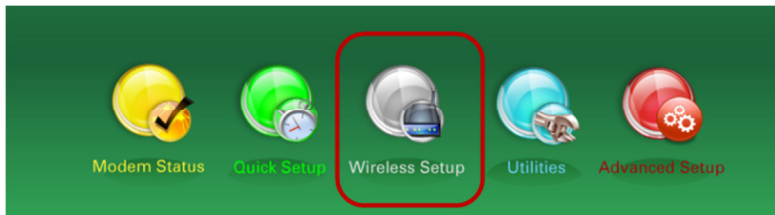
Modem GUI Login



- Log in to your modem by entering the Admin Username and Admin Password, then select "Apply."
- If your modem is using the default settings, this information is located on a sticker on the modem.

#### Step 4

Select “Wireless Setup”



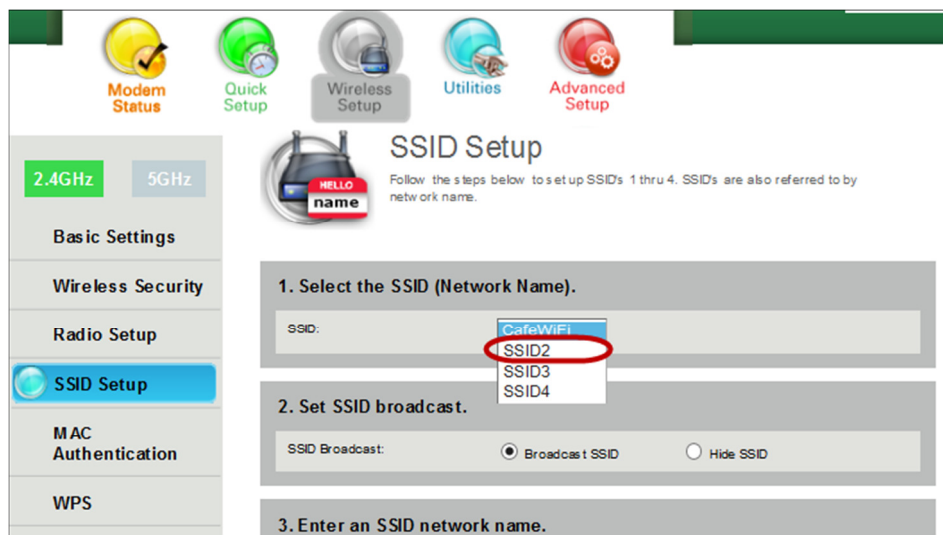
#### Step 5

Select “SSID Setup”



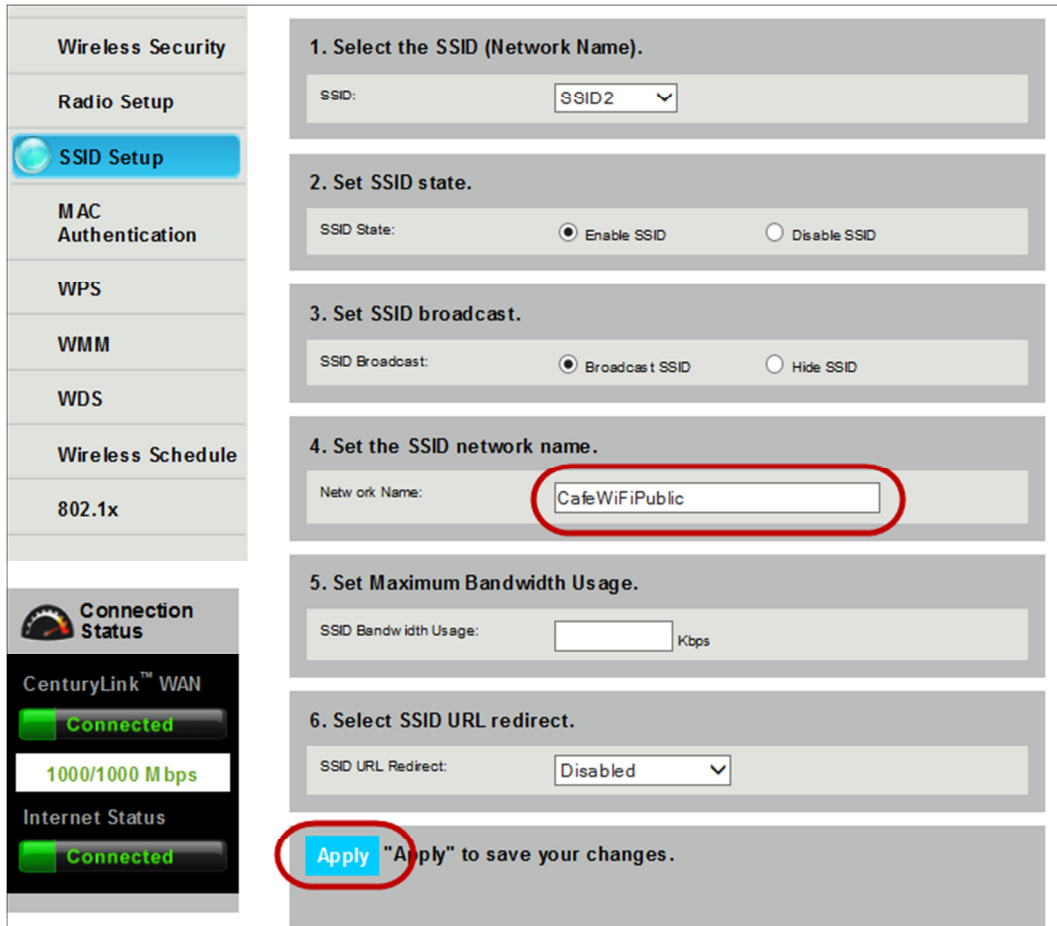
#### Step 6

In the dropdown for “SSID”, select one of the lower options from the list (e.g., “SSID2”)



## Step 7

In #4, enter a name for your public network. Your customers will find it more easily if you include “Public” in the name. Then select “Apply and wait for the changes to be completed.”



**Wireless Security**

**Radio Setup**

**SSID Setup**

**MAC Authentication**

**WPS**

**WMM**

**WDS**

**Wireless Schedule**

**802.1x**

**Connection Status**

CenturyLink™ WAN

**Connected**

1000/1000 Mbps

Internet Status

**Connected**

**1. Select the SSID (Network Name).**

SSID:

**2. Set SSID state.**

SSID State:  Enable SSID  Disable SSID

**3. Set SSID broadcast.**

SSID Broadcast:  Broadcast SSID  Hide SSID

**4. Set the SSID network name.**

Network Name:

**5. Set Maximum Bandwidth Usage.**

SSID Bandwidth Usage:  Kbps

**6. Select SSID URL redirect.**

SSID URL Redirect:

**Apply** "Apply" to save your changes.

## Step 8

Select “Wireless Security”



The screenshot shows the 'SSID Setup' page. At the top, there are navigation icons for Modem Status, Quick Setup, Wireless Setup, Utilities, and Advanced Setup. Below these are frequency options for 2.4GHz and 5GHz. The left sidebar contains a menu with 'Basic Settings', 'Wireless Security' (circled in red), 'Radio Setup', 'SSID Setup', 'MAC Authentication', and 'WDS'. The main content area is titled 'SSID Setup' and includes instructions: 'Follow the steps below to set up SSID's 1 thru 4. SSID's are also referred to by network name.' The first step is '1. Select the SSID (Network Name).', with a dropdown menu for 'SSID:' showing 'CafeWiFiPublic'. The second step is '2. Set SSID state.', with radio buttons for 'Enable SSID' (selected) and 'Disable SSID'.

## Step 9

In the dropdown for “SSID”, select the name you entered for your public Wi-Fi network

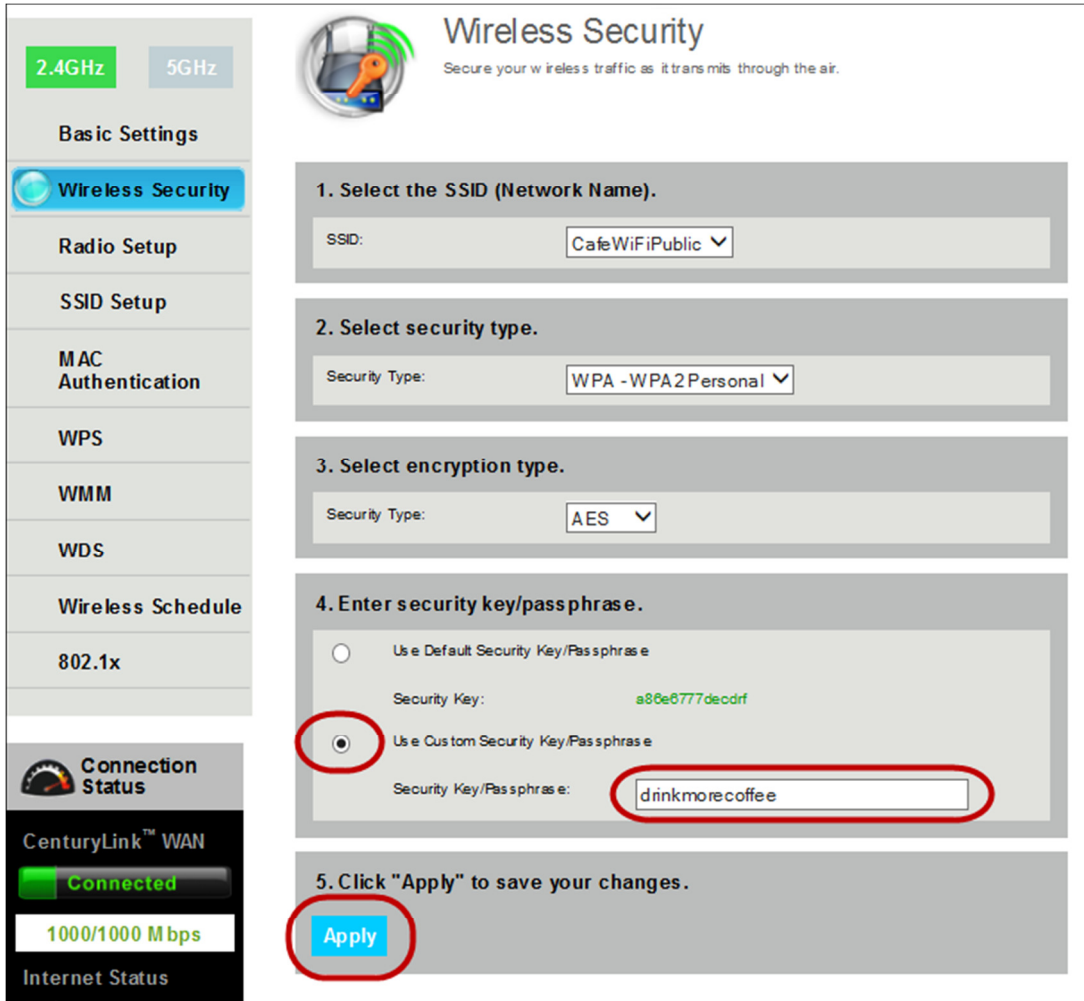


The screenshot shows the 'Wireless Security' page. At the top, there are navigation icons for Modem Status, Quick Setup, Wireless Setup, Utilities, and Advanced Setup. Below these are frequency options for 2.4GHz and 5GHz. The left sidebar contains a menu with 'Basic Settings', 'Wireless Security' (highlighted in blue), 'Radio Setup', 'SSID Setup', 'MAC Authentication', 'WPS', 'WMM', and 'WDS'. The main content area is titled 'Wireless Security' and includes instructions: 'Secure your wireless traffic as it transmits through the air.' The first step is '1. Select the SSID (Network Name).', with a dropdown menu for 'SSID:' showing a list of options: 'CafeWiFi', 'CafeWiFiPublic' (circled in red), 'SSID3', and 'SSID4'. The second step is '2. Select security type.', with a dropdown menu for 'Security Type:' showing 'WPA - WPA2 Personal'. The third step is '3. Select encryption type.', with a dropdown menu for 'Security Type:' showing 'AES'.

## Step 10

Enter a passphrase.

- In #4, select the radio button for “Use Custom Security Key/Passphrase.”
- In #4, enter your “Security Key/Passphrase.”
  - Make it a phrase that is easy for your customers to understand and enter.
  - Make it different than the password to your private Wi-Fi network.
- In #5, select “Apply” and wait for the changes to complete.



## Step 11

Using a smartphone or tablet, test your public Wi-Fi network.

You should be able to find and connect to your public Wi-Fi network.